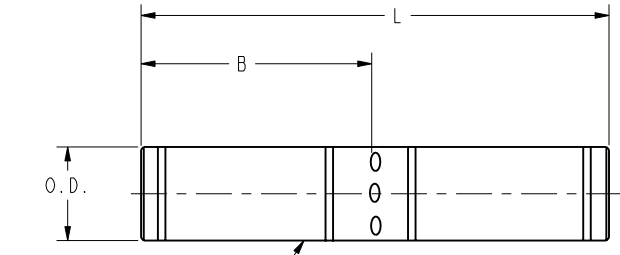


DRAWING NO.
SD022390

CATALOG NUMBER	FIG. NO.	COPPER CONDUCTOR		B	L ± .04	O.D. ± .01	COLOR CODE	WIRE STRIP LENGTH	NO. OF SPACES PER END
		NAVY	COM'L CABLE						
YS8CL	1	23 (.171)	AN-8 STR. (.167) 6 SOL. (.162)	.44	1.00	.27	RED	.50	1
YS6CL	1	-----	6 STR. (.183)	.81	1.75	.29	BLUE	.88	1
YS5CL	1	30 (.202)	5 STR. (.206)	.81	1.90	.30	BLUE	.88	1
YS4CL	1	40 (.226)	4 STR. (.231)	.81	1.75	.34	GRAY	.88	1
YS3CL	1	50 (.254)	3 STR. (.261) 2 SOL. (.257)	.88	2.05	.38	WHITE	.94	1
YS2CL	1	60 (.282)	2 STR. (.291)	.88	2.00	.42	BROWN	.94	1
YS1CL	1	75 (.317)	1 STR. (.330)	.88	2.06	.46	GREEN	.94	1
YS25L	1	100 (.363)	1/0 STR. (.373)	.88	2.08	.51	PINK	.94	1
YS26L	1	125 (.407)	2/0 STR. (.418)	.94	2.17	.56	BLACK	1.00	1
YS27L	1	150 (.457)	3/0 STR. (.470)	1.00	2.30	.62	ORANGE	1.06	1
YS28L	1	200 (.514)	4/0 STR. (.528)	1.00	2.32	.69	PURPLE	1.06	1
YS29L	1	250 (.577)	250 kcmil (.575)	1.06	2.46	.75	YELLOW	1.12	1
YS30L	2	300 (.628)	300 kcmil (.630)	1.06	2.47	.81	WHITE	1.12	2
YS31L	2	350 (.681)	350 kcmil (.681)	1.12	2.60	.88	RED	1.18	2
YS32L	2	400 (.742)	400 kcmil (.728)	1.19	2.74	.95	BLUE	1.25	2
YS33L	2	-----	450 kcmil (.772)	1.19	2.76	1.01	GRAY	1.25	2
YS34L	2	-----	500 kcmil (.814)	1.38	3.15	1.06	BROWN	1.44	2
YS35L	2	500 (.832)	550 kcmil (.855)	1.38	3.20	1.12	YELLOW	1.44	2
YS36L	2	-----	600 kcmil (.893)	1.38	3.22	1.18	GREEN	1.44	2
YS37L	2	650 (.936)	650 kcmil (.929)	1.38	3.23	1.23	ORANGE	1.44	1
YS38L	2	-----	700 kcmil (.964)	1.38	3.22	1.25	PINK	1.44	1
YS39L	2	-----	750 kcmil (.998)	1.62	3.72	1.30	BLACK	1.69	2
YS40L	2	-----	800 kcmil (1.031)	1.62	3.75	1.35	ORANGE	1.69	1
YS41L	2	800 (1.051)	850 kcmil (1.062)	1.62	3.76	1.38	GOLD	1.69	1
YS44L	2	-----	1000 kcmil (1.152)	1.88	4.28	1.49	WHITE	1.94	1
YS45L	2	-----	1250 kcmil (1.289)	2.00	4.60	1.69	YELLOW	2.06	2
YS453L	2	1300 (1.325)	1300 kcmil (1.315)	2.00	4.60	1.74	ORANGE	2.06	2
YS46L	2	-----	1500 kcmil (1.412)	2.00	4.40	1.84	GREEN	2.06	2
YS47L	2	-----	1750 kcmil (1.527)	2.19	5.00	1.98	GRAY	2.25	2
YS48L	2	-----	2000 kcmil (1.631)	2.25	5.17	2.12	BROWN	2.31	2



CRIMP BETWEEN COLOR CODED STRIPES.

COLOR CODED INK MARKING (TYPICAL LETTERING)

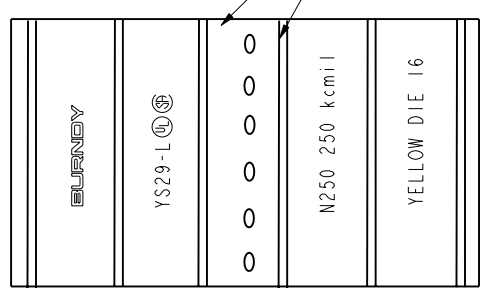
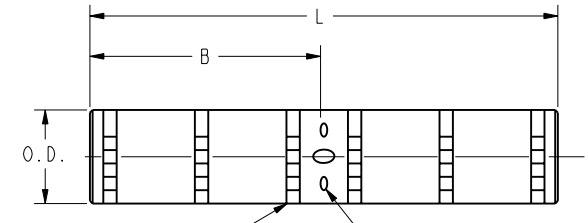


FIG. 1



CRIMP BETWEEN KNURLS

CABLE STOPS

KNURLS

COLOR CODED INK DOT (TYPICAL LETTERING)

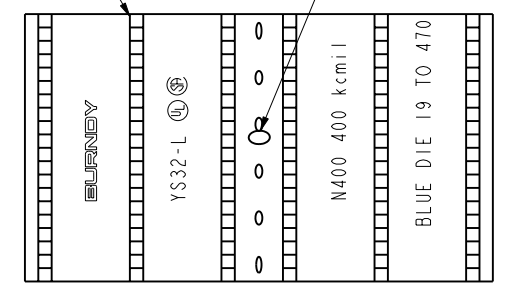


FIG. 2

NOTES:

- 1 FOR SILVER PLATING ON HYLINKS™ ADD SUFFIX LETTERS "LV" TO THE CATALOG NUMBER.
- 2 MATERIAL: COPPER TUBE.
- 3 FINISH: TIN PLATED.

TO ORDER BURNDY® PRC

HYLINK™	
ITEM NO:	502815
CAT. NO:	YS-L (TABLE)
DRAWN BY:	C. RACCANO 10/11/76
CHECKER:	C. A. R 10/12/76
DSN APPVL:	--
MFG APPVL:	--
QA APPVL:	--
MKT APPVL:	--
PROJ FAM:	CM&R COMPRESSION
PROJECT #:	--
DOCUMENT TYPE:	Sales
REL LEVEL:	Released
DRAWING NO:	SD022390
REV:	J
SCALE:	1:1
SHEET:	1 OF 6

REV: PE0200